

YOUR EVENT AT



Invite your guests to the SHOWPALAST
MÜNCHEN and inspire them with the
realization of a top-class event.



TABLE OF CONTENTS

- I. Showpalast Munich
- II. Location overview
 - i. General and technical equipment
 - ii. Auditorium
 - iii. Gala dinner
 - iv. Car presentation
 - v. Foyer
- III. Additional premises
 - i. Riding hall
 - ii. Guest tent
 - iii. The Cube
 - iv. University
 - v. Little barn
 - vi. Cinema
- IV. Add-On
 - i. Wooden cabins
 - ii. Usable advertising space
- I. Backstage entrance, delivery & fire brigade zone
- II. Location rental offer



I. Welcome in the SHOWPALAST MUNICH



Welcome your guests at THE new and unique event location in the north of Munich.

The SHOWPALAST MUNICH has an auditorium for up to 1,700 people with a stage area of over 1,200 square meters and the largest permanently installed LED wall in Europe with almost 600 square meters.

Depending on the type of the event, we offer ideal conditions for large events for up to 2,000 people on an area of over 5 hectares, as well as events for smaller groups in the additional premises of the area around the SHOWPALAST MUNICH.

Are you looking for a suitable setting for a unique event and not just a venue?

Impress your guests with:

- **Exceptional architecture**
- a spacious area with over 50,000 m² and numerous, flexibly usable event areas and premises, as well as an **outstanding foyer** with 80 LED slats and
- **atmospheric staging of the show palace** with the help of the most professional technical support

SHOWPALAST MÜNCHEN | Site overview



Temperature-controlled premises

Limited temperature-controlled premises

Gebäude

1

SHOWPALAST

2

MILEWAY

3

PARKING PLACE

4

STABLE

5

ROUND PEN

6

CINEMA

7

RIDING HALL

8

THE CUBE

9

LITTLE BARN

10

UNIVERSITY

11

EPONA

12

FORUM

13

MARKET PL. & GUEST TENT

14

SPA & MORE

Zufahrtswege & Personeneingänge

a

Main entrance guests

b

Side entrance guests

c

Backstage entrance

d

Main entrance double gate

e

Side entrance double gate

f

Backstage entrance double gate

II. SHOWPALAST MÜNCHEN | General and technical equipment



In the heart of our location, SHOWPALAST MUNICH offers plenty of space for your own wishes and ideas. A unique proximity to the stage is created with the 20 steeply rising spectator stands for **up to 1,700 people**. Our impressive **stage area with 1,200 m²** is also available for a wide range of variants.

General information about the theatre hall

- Steeply rising audience ranks and thus a unique proximity to the stage
- Maximum room height 17 m
- Acting area 780 m²
- Backstage area (behind LED) 430 m²

LIGHTING SYSTEM

- 40 Moving Lights Martin MAC Viper Profile
- 36 Moving Lights GLP impression X4 L
- 30 Moving Lights GLP impression X4 XL
- 40 Moving Lights GLP impression X4
- 34 Expolite TourLED 42 cm
- Optional Beam-Package can be booked

II. SHOWPALAST MÜNCHEN | General and technical equipment



Lighting control desks

- 1 MA Lighting grandMA2 light
- 1 MA Lighting grandMA2 light (Backup)
- 1 MA-Lighting NSP 2

LED- AND BEAMER-PROJECTION HORIZON, ACTING AREA AND IN THE AUDIENCE AREA

- 594 square meters (66 x 9 meter) LED-Wall, 4-parts concave
- Optional projector- / LED-Packages can be booked

INPUT

- Pandoras Box Media Server incl. Backup

SOUND SYSTEM

- A total of 63 loudspeakers, of which 52 are for the audience area only
- Complett Meyer Galileo GALAXY Control
- 3-zone 7.1-Surround-System, individual loudspeakers / segmente/ individual zones can be switched off
- Trouble free Dante-Connection
- Central Fron of the House room (control room) with and without glass
- Please contact us about for optional packages

CAMERA TECHNOLOGY (optional)

- An individual offer from our technical partner PRG will be created on request.

II. SHOWPALAST MÜNCHEN | General and technical equipment



Flying system

- 3 flying systems for horizontal and vertical flights
 - Airfield: 58 m horizontally (ca. 44 m visible onstage) 8,5 m vertically
 - Maximum speed 1,2m/s (horizontal & vertical)
 - 200 kg payload
 - System 1 & 2 approx. 1/3 onstage
 - System 3 approx. 2/3 onstage
- 2 moving points (vertical only)
 - Approx. 1 m in front of the LED-wall; each about 3m from the center of the stage
 - 150kg payload
 - Maximum speed 1,2 m/s
 - Airfield: 9 m vertical
- 1 semi-transparent main curtain
 - Directly on the stage front
 - Not usable for other loads
- Additional suspension points possible at extra costs

II. SHOWPALAST MÜNCHEN | General and technical equipment



TECHNICAL DETAILS INDOORS

- Access width at the Showpalast: 3,20 m | 2 x 2,50 m | 1,70 m
- Passage height: 2,90 m
- Stage floor bearing capacity: up to 6 tons per m²

TECHNICAL DETAILS OUTDOORS

- Access at the outdoor premises: via the parking place, Maria-Goeppert-Mayer Street
- Passage height: no limit
- Passage width: 4,00 m
- Access route ground condition: compacted gravel layer

II. SHOWPALAST MÜNCHEN | Auditorium capacity

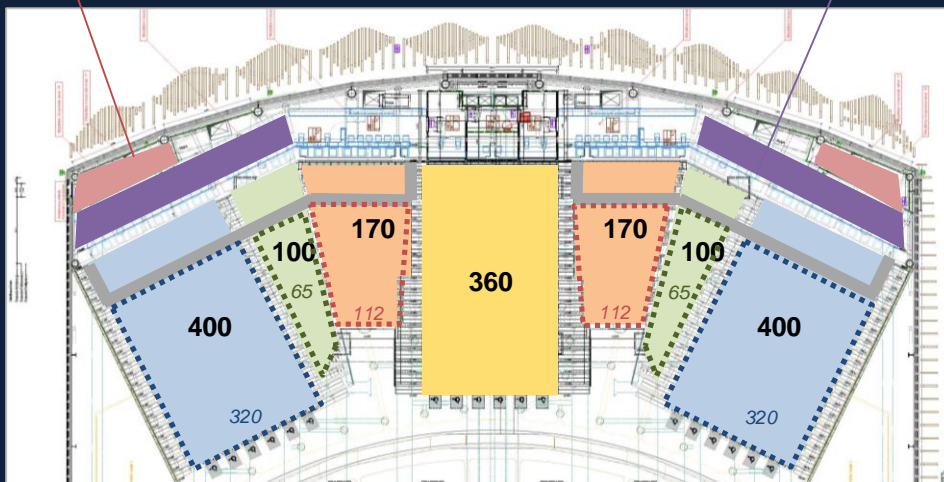


Corporate Lager

- 22 m² on each side
- lockable
- Storage facility
- Orga-Office etc.

Corporate Area

- 78 m² on each side
- Above the audience ranks



„Great Hall“

„Small Hall“

(with the curtain
drawn in front of the
rear 4 audience rows)

360 guests

700 guests

900 guests

1.700 guests

18 wheelchair places

584 guests

714 guests

1.354 guests

II. SHOWPALAST MÜNCHEN | Gala-Dinner & Evening Events



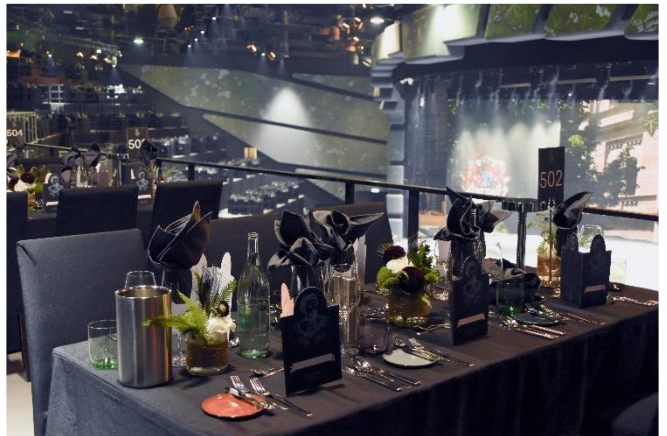
At your request, the SHOWPALAST MÜNCHEN hall can be transformed into an exceptional dinner location.

20 rows of seats can be built over, so that up to 850 guests can be seated at elegantly laid tables and have a clear view of the stage area.

Let yourself be inspired and create an unforgettable evening for customers, employees or business partners.

Dine in an unparalleled atmosphere!

Plan your gala events that impress even more - for special occasions and with an individual layout for guests and program. We would be happy to advise you.



Implement your spectacular ideas - unique technical possibilities and the largest LED wall in Europe are at your disposal.

II. SHOWPALAST MÜNCHEN | The really big stage for the car presentations



YOUR POSSIBILITIES

- Space for up to 1.700 seated guests
- Unique technical and spacial framework
- Large outdoor area with parking spaces for vehicles
- Ground-level access routes - no lifting technology required

Present your vehicles in a place that is made for it:

The SHOWPALAST MUNICH has 780 square meters of visible stage area, the largest permanently installed LED wall in Europe and four ground-level entrances. Your presentation becomes an impressive show highlight here.

Skillfully stage your models with our sophisticated stage technology and let the exclusive ambience work on your guests.

Impressing can be so easy!

Car presentations are not just events. Do you have to reinvent the wheel? Our location is different and unique - with us you have countless creative options for your ideas.

Implement your ideas that are spectacular - unique technical possibilities and the largest LED wall in Europe are at your disposal.

II. SHOWPALAST MÜNCHEN | The really big stage for the car presentations



The theater has an indoor auditorium for up to 1,700 people. The 20 steeply rising rows of seats in the more than 17 meter high hall create a unique proximity to the stage.

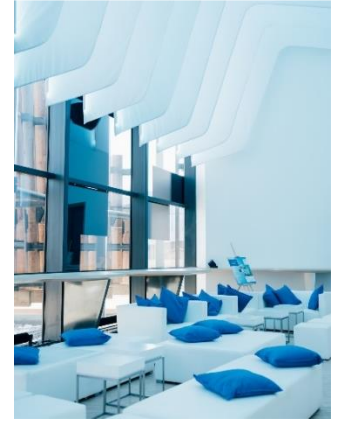
The boundary between auditorium and stage blurs - guests have a unique experience right in the middle.



The gauze, a discreetly transparent stage curtain that can be played with content, enables an effective opening, an inconspicuous conversion or the smart announcement of a break.

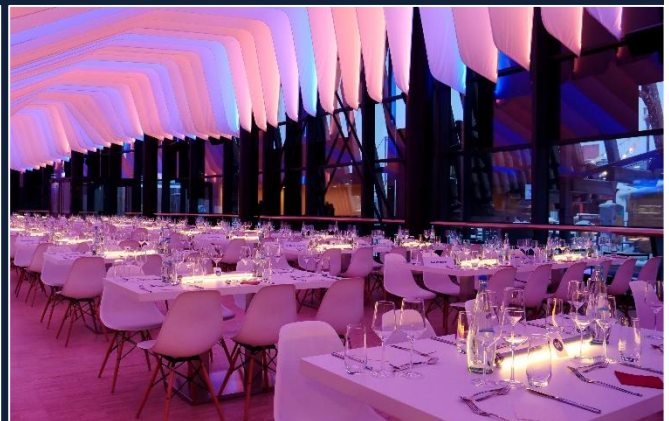
There are ideal parking spaces in the outdoor area around the SHOWPALAST MUNICH, not only for cars, but also for trucks and buses. A presentation in the entrance area creates a first visual highlight when the guests arrive. Or you can show your vehicle prominently in front of the visually impressive facade construction of SHOWPALAST MUNICH.

II. SHOWPALAST MÜNCHEN | The Foyer with 574 m² catering area



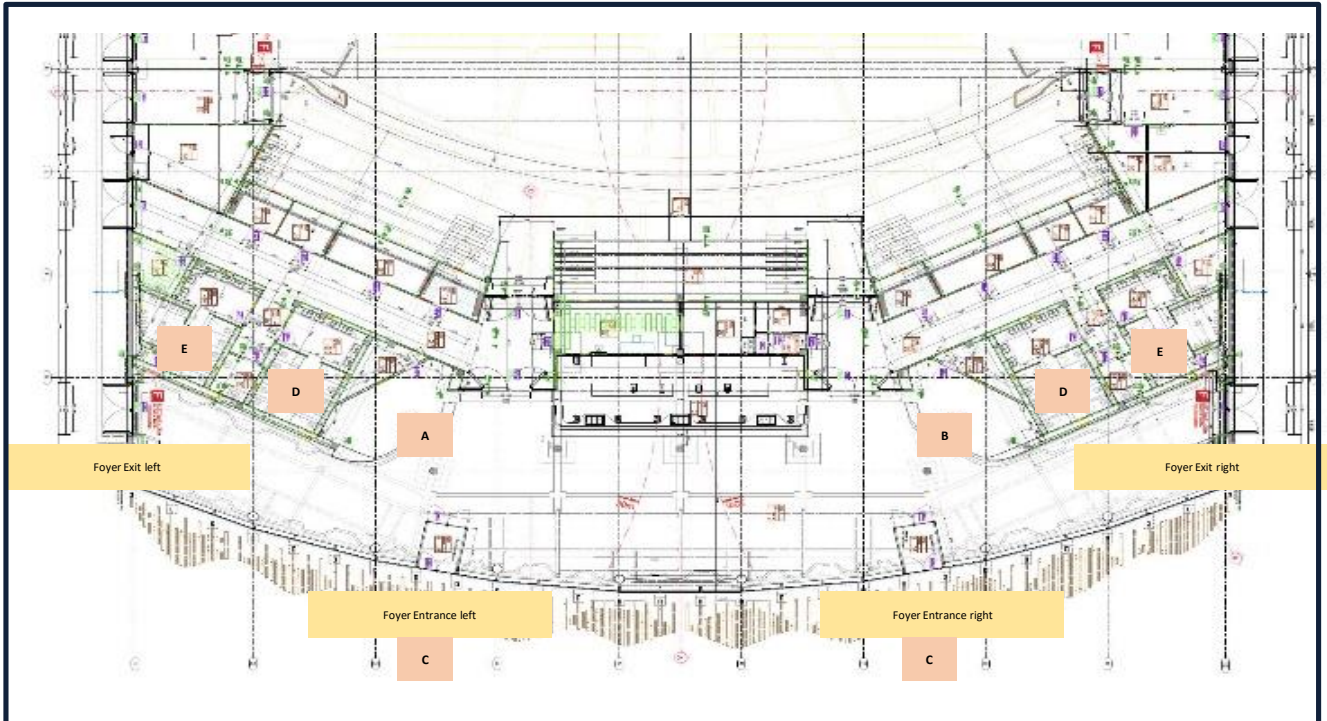
Our foyer has 80 LED slats with 12,500 LEDs over a length of 1.2 kilometers, which can be controlled in your desired play of colors - a visual highlight on arrival.

The two side wings of the foyer can also be used as a VIP area or lounge



Flying buffet for maximum	500 guests	Individual stand tables
Catering banquet seating	170 guests	17 tables à 10 guests
Set dinner	228 guests	33 tables à 6 guests

II. SHOWPALAST MÜNCHEN | The Foyer



A) Nische on the left

Ideally usable as accreditation, since the guests come from the main entrance through the foyer entrance on the left, into the foyer. Storage space can be used for:

- Roll-Ups cases
- Additional material from the agency
- Guest's luggage

B) Nische on the right

Ideal as a cloakroom

- Up to 700 PAX; from 700 PAX split in two:
 - in both niches (e.g. alphabetically; accreditation and cloakroom on both sides)
 - Shared use of the tent

C) Foyer Entrance Left & Right

- These are not escape routes, so the foyer exit on the left and right, including the flight routes, must remain free (at least 3.50 m)
- Escape routes are to be agreed individually with the event master technician depending on the event

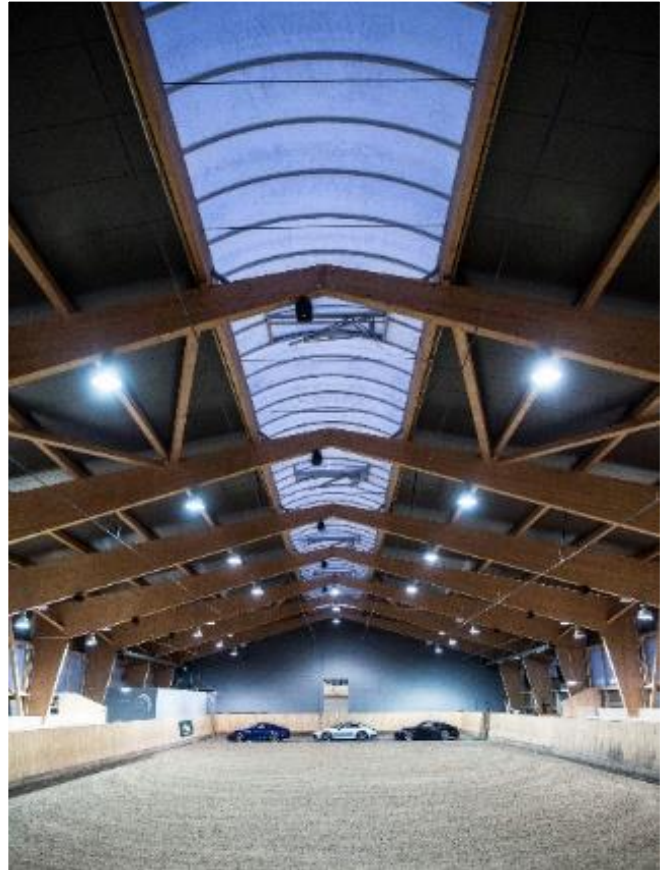
D) Toilets women left & right

- 10 toilets and 6 sinks each
- Music playback possible
- 4 A4 frames available for branding

E) Toilets man left & right

- 6 toilets, 9 urinals and 6 sinks each
- Music playback possible
- 4 A4 frames available for branding

III. Additional premises | RIDING HALL



Size: approx. 1100 m²

Capacity side stands: approx. 450 guests

Capacity scene area: approx. 800 guests

Equipment:

- Light
- Sound

Overbuilding of the riding sand possible: banquet seating on the scene area approx. 2/3 of the total area: 46 tables 460 guests incl. 1 buffet and 1 bar

Possible uses:

- Smaller trade fairs & networking
- Set dinner
- Smaller performances
- Shows & trainings
- Etc.

III. Additional premises | GUEST TENT



Size: approx. 1.000 m²

Capacity: approx. 700 Personen

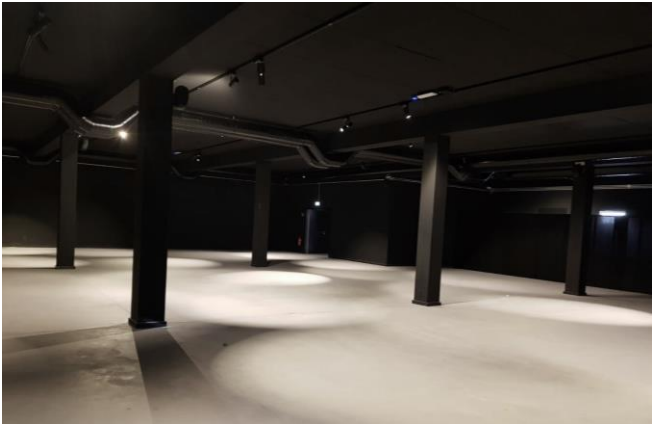
Equipment:

- Electricity and water connection
- Light
- Heated

Possible uses:

- Catering
- Cloakroom
- Marketplace
- Etc.

III. Additional premises| THE CUBE



Size: approx. 428 m²

Capacity: approx. 350 Personen

Equipment:

- Light
- Sound
- Heatable up to approx. 5°C outdoor temperature; additional heating possible
- Complete blacking-out of all doors & windows

Possible uses:

- Experience World
- VIP Catering
- Silent Disco
- Marketplace
- Etc.

III. Additional premises | UNIVERSITY



Size: approx. 150 m²

Capacity: approx. 150 guests in a U-shape seating with free presentation space

Equipment:

- Projector (HDMI connection; Jack Sound-Input; DVI monitor connection)
- Light
- Sound
- Heatable up to approx. 5°C outdoor temperature; additional heating possible

Possible uses:

- Workshop
- Product presentations
- Etc.

III. Additional premises | LITTLE BARN



Size: approx. 144 m²

Capacity:

set lunch	approx. 120 guests inside and another approx. 36 guests in the covered outdoor area
standing	approx. 160 guests

Equipment:

- Light
- Sound
- Heatable up to approx. 5°C outdoor temperature; additional heating possible
- Electricity and water connection

Possible uses:

- Lunch
- Styling Lounge
- Workshop

III. Additional premises | CINEMA



Size: approx. 214 m²

Capacity:

approx. 195 guests seated with free presentation space

Equipment:

- Light
- Sound
- Projector (HDMI connection; jack sound input; DVI monitor connection)
- Heatable up to approx. 5°C outdoor temperature; additional heating possible
- 9 rows of seats; step depth approx. 1,20 m

Possible uses:

- Presentation
- Movie screenings
- Etc.



IV. Add-On | MARKETPLACE wooden cabins



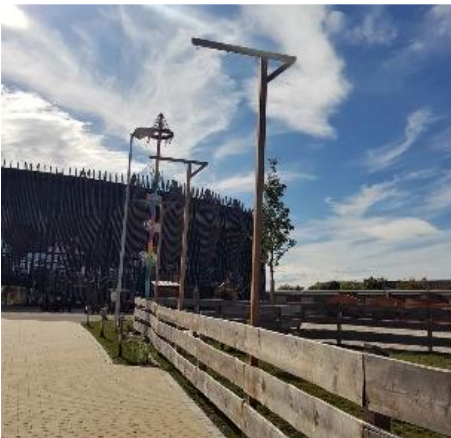
General

- Dimensions: approx. 270 cm x 190 cm x 200 cm (h)
- 2 distribution windows
- Access door and storage facility
- As well as three other wooden cabins for free use

Cabin interior (5 items)

<u>Cabin - The Bottle</u>	<ul style="list-style-type: none"> • Power connection • Sideboard (200 cm) incl. cabinet with sliding door.
<u>Cabin - Cowboy Hat</u>	<ul style="list-style-type: none"> • Power and water connection • Sideboard (200 cm) incl. cabinet with sliding door. • Double gastro fryer with high current • Double grill plate • Extractor hood
<u>Cabin - The Horseshoe</u>	<ul style="list-style-type: none"> • Power connection • Water connection • Sideboard (200 cm) incl. cabinet with sliding door.
<u>Cabin - The Saloon</u>	<ul style="list-style-type: none"> • 590 cm x 600 cm x 220 cm (h) • Double swing door as entrance • Cabin - The star • Power connection • Sideboard (200 cm) incl. cabinet with sliding door. • Sideboard (80 cm) incl. cabinet with sliding door.
<u>Cabin - The pistol</u>	<ul style="list-style-type: none"> • Power connection • Water connection • Double gastro fryer with high current • Double grill plate & fries warmer • Sideboard (200 cm) incl. cabinet with sliding door. • Sideboard (80 cm) incl. cabinet with sliding door. • Cooling unit with 4 drawers

IV. Add-On | Usable advertising space



Forecourt outside

Fast dismantling (fire brigade access)

(Inflated aerial motifs etc. inside the park possible outside the escape routes e.g. next to the Trojan horse)

Large banner main entrance

Amount	1
Dimensions	WxH 13 m x 2 m

Entrance board

Amount	3
Dimensions	WxH 2,9 m x 1,9 m

Flags main entrance / forecourt

Amount	2
Dimensions	WxH 1,2 m x max. 4 - 5 m

Flags main path

Amount	12
Dimensions	WxH 0,9 m x max. 1 - 2 m

Wooden fence Showpalast

Amount	8
Dimensions	WxH 3,5 m x 2,5 m

Showpalast building banner (already detached)

Dimensions left	WxH 15,4 m x 4,90 m
Dimensions right	WxH 23,10 m x 8,30 m

3 screens in the foyer above the bar and a permanently installed screen in the right side wing can be used for video and image recordings in addition.

It is also possible to use the pedestrian crossing to the P + R parking garage as advertising space in consultation of the organiser with the MVG.

Invite your guests to SHOWPALAST
MUNICH and inspire them with the
realization of a top-class event.



We will be happy to answer any
questions and further arrangements.

We look forward to hearing from you.

event@apassionata.com

